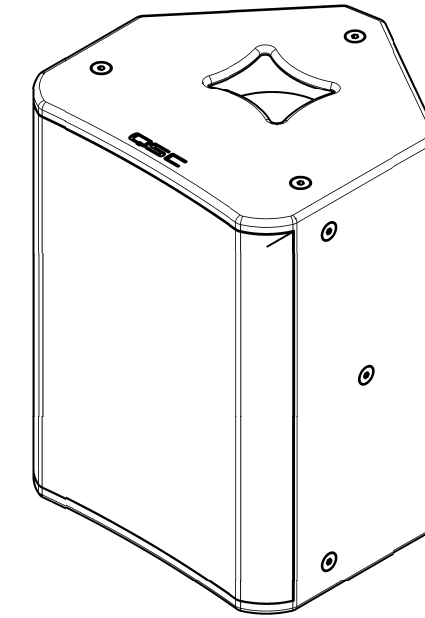
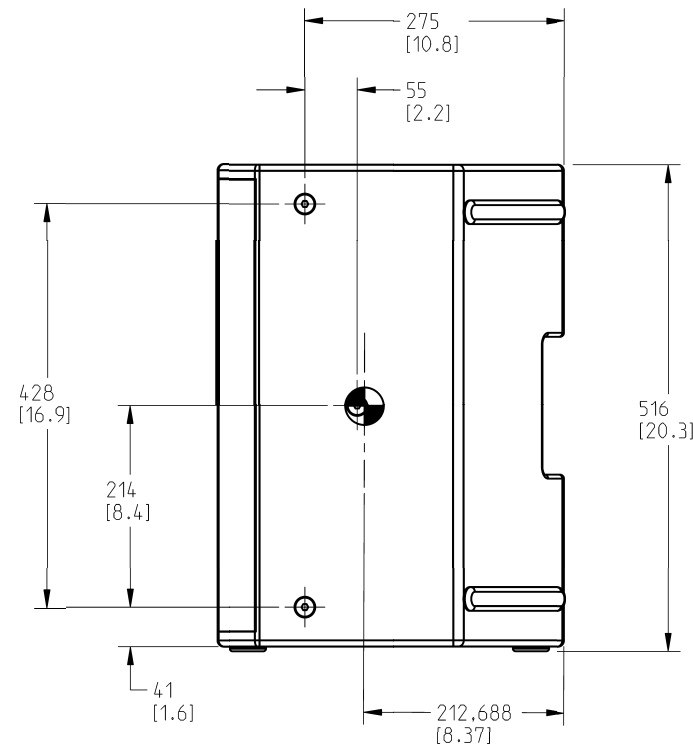
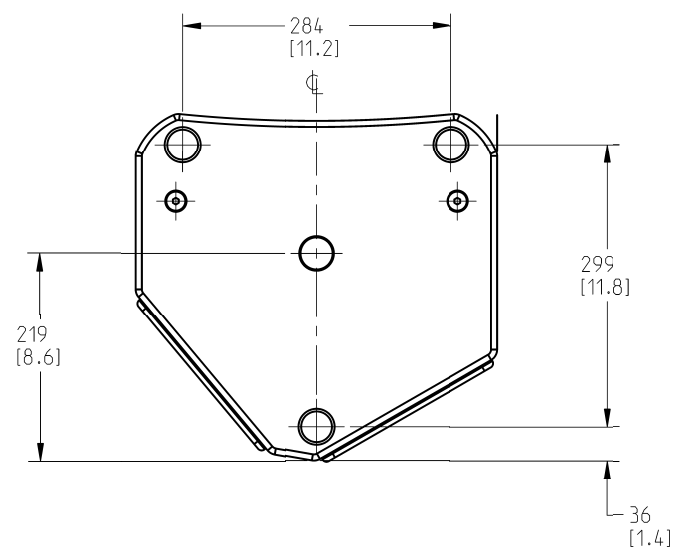
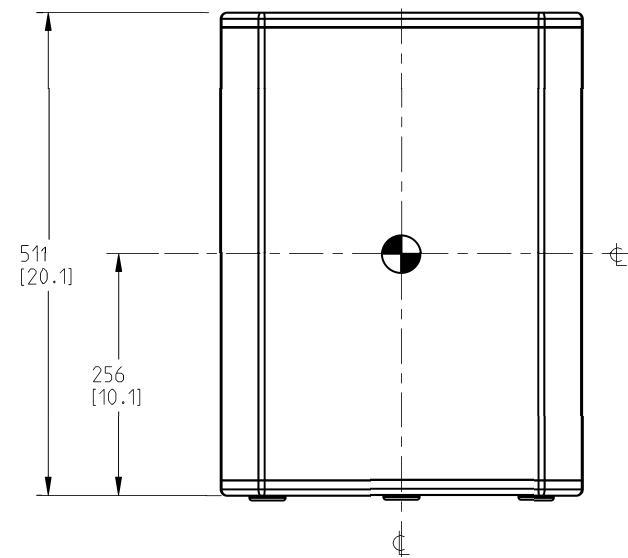
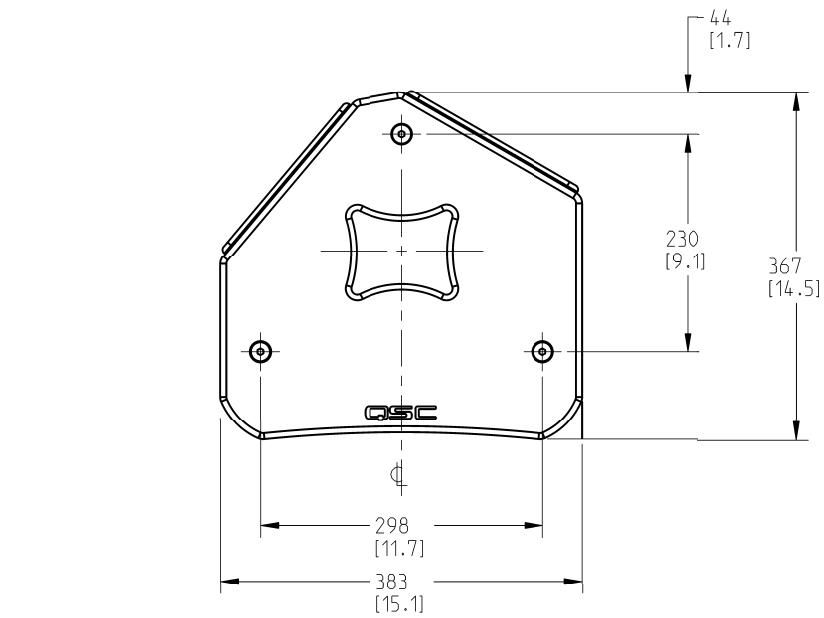


THIS DOCUMENT CONTAINS PROPRIETARY INFORMATION WHICH IS THE PROPERTY OF QSC, LLC. THAT MAY NOT BE DISCLOSED, REPRODUCED OR USED WITHOUT EXPRESS WRITTEN CONSENT FROM QSC, LLC.

REVISIONS			
REV	DESCRIPTION	BY	DATE
A	RELEASE FOR SALES AND MARKETING	AA	02-OCT-15



- 5. PARTS ARE SYMMETRICAL ABOUT CENTER LINES UNLESS OTHERWISE NOTED.
 - 4. SYMBOL INDICATES CENTER OF BALANCE.
 - 3. SYMBOL INDICATES POLE MOUNT LOCATION.
 - 2. TOLERANCES (MM): X ± 5, ANGLES: ± 1°.
 - 1. NET WEIGHT APPROX.
- NOTE: UNLESS OTHERWISE SPECIFIED

UNLESS OTHERWISE SPECIFIED DIMENSIONS IN MILLIMETERS (IN) TOLERANCES ARE: DECIMALS .XX ± .01 ANGLES ± 1/2 DEBURR EDGES .25 (.010) R MAX MATERIAL FINISH	DESIGNER ENGINEERING SERVICES	QSC, LLC 1675 MACARTHUR BOULEVARD COSTA MESA, CA 92626	SPEAKER, FINISHED, AP-4122m	
	ENGINEER P. WINOCUR		SIZE D	REV A
	TECHNICAL DIRECTOR J. HALLEY	DRAWING NO. FG-014122-2D	DRAWING INFO: FG-014122-2D.A.2	
	MANUFACTURING ENGINEER M. JEN	SCALE: 0.250	DO NOT SCALE DRAWING SHEET 1 OF 1	